

OTTAWA

magazine.com

City Home

ALL NEW
SPECIAL
EDITION

GREAT SPACES

Inside the city's most stylish homes

Decorating With Colour,
Great Rooms (and How
to Get the Look),
Designer Picks

A decadent deck in
New Edinburgh, p. 28

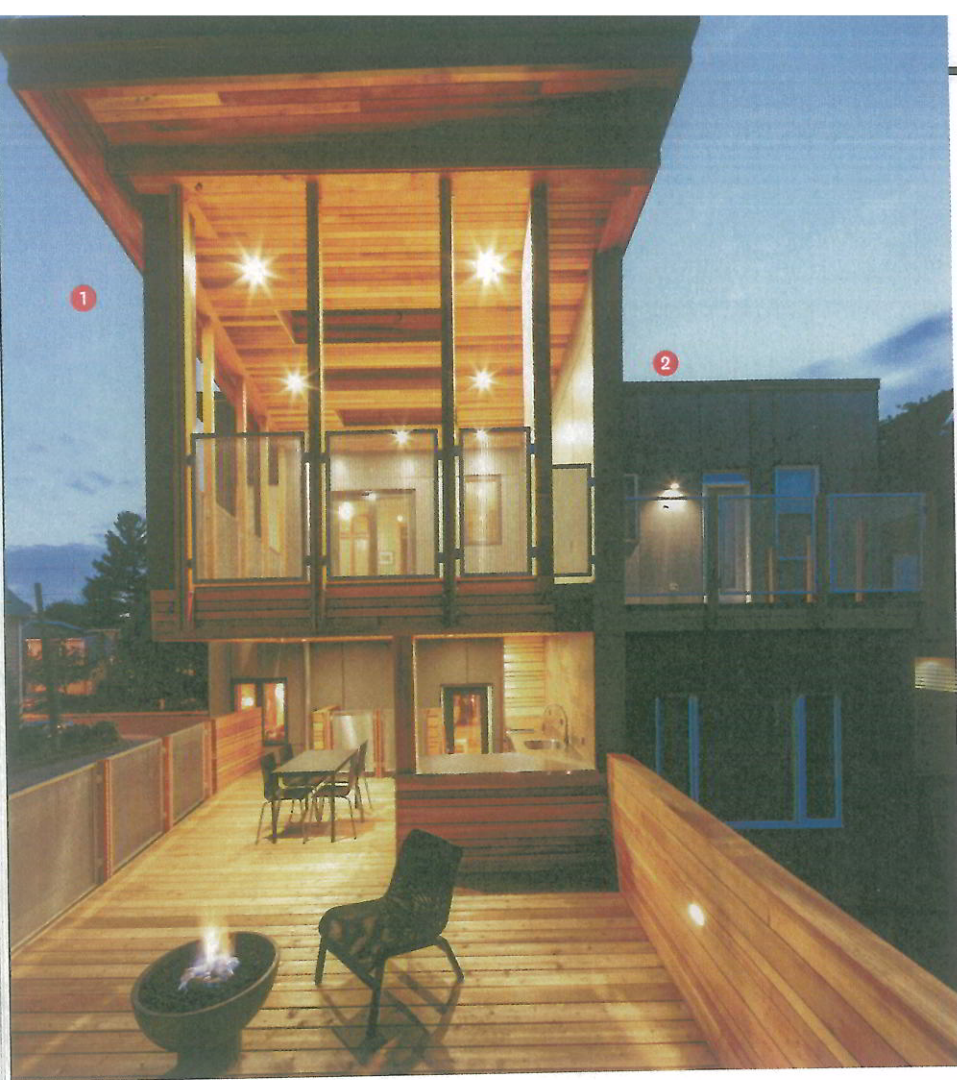
TOP 100 DECOR STORES

CITYHOME 2014/2015 \$9.95



48

0 74470 70125 5



THE DETAILS

Design: Christopher Simmonds Architect
Contractor: RND Construction
Backsplash: Ceragres
Cabinetry: Stay On Deck/Handwerk
Counter: Stainless steel, Createk
Faucet: Jalo "chef's collection"
Firepit: Hand-cast concrete firepit by Solus
Fridge: Perlick
Lighting: SLV, Lithonia, and Kichler, from Marchand Lighting + Electrical, LumenTruss from Luminergie
Mesh screens: Stainless steel, McNichols Company
Sinks: Stainless steel, Cantrio Concepts
Staircase: Accurate Stairs
Stovetop: DCS by Fisher & Paykel
Wood: Western red cedar and Douglas fir, The Woodsources

DECKED OUT

A tapered two-storey deck includes a full kitchen, a cozy fire pit, and a greenhouse

BY SARAH BROWN

Just in time for summer 2014, the cruise ship of decks was unveiled in New Edinburgh. Truth be told, it seems impertinent to call it a deck. Yes, it boasts red cedar, that trademark of the classic Canadian deck, but this is really a two-storey outdoor room, complete with plumbing, electricity, gas, and exquisite lighting. The new space replaces a similarly sized deck that was slowly falling apart — and whose square dimensions obstructed views into a shady pocket garden. The homeowners had previously resided in Tanzania for a few years, there discovering the joy of living mostly outside. Back in Ottawa, they were looking to replicate that long outdoor season. They needed innovative ideas that would allow them to hang out in the fresh air — no matter how hard and cold the wind blew.

Architect Chris Simmonds collaborated with Roy Nandram of RND Construction to envisage and build a tapered deck that allows for unobstructed views into the garden from the main house. The top deck, which originally had an open trellis, now boasts a solid roof with skylights. The homeowners plan to use the space as a greenhouse of sorts, so Mylar screening has been installed to lengthen the growing season. Once it gets warm, the screens can come down. The main entertaining space, meanwhile, is a chef's delight, with a full kitchen protected on three sides. "If it's not minus 30, you can be out here cooking," says Simmonds. On cool evenings, a gas firepit keeps things cozy and casts a welcoming glow over the proceedings.



PHOTOGRAPHY: DOUBLESPEACE PHOTOGRAPHY



1 The upper deck has three **skylights**, which will allow the owners to tend a garden. In the spring, Mylar screens will shield the tender plants from the cold

2 The neighbour's more modest deck complements the overall look, so the backyards are in sync

3 The deck was tapered to allow the homeowners to see into their **back garden** from within the house

4 The lower deck has a **full kitchen** and dining area. The cozy **gas firepit** extends the outdoor season

5 The **attention to detail** on this deck extends to exquisite lighting that allows the deck to be used at all hours

6 The **shady pocket garden** is anchored by a corner pond

7 The **sheltered kitchen** will be comfortable to cook in almost all year-round

